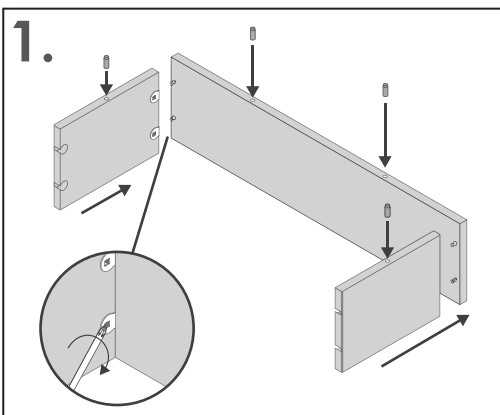
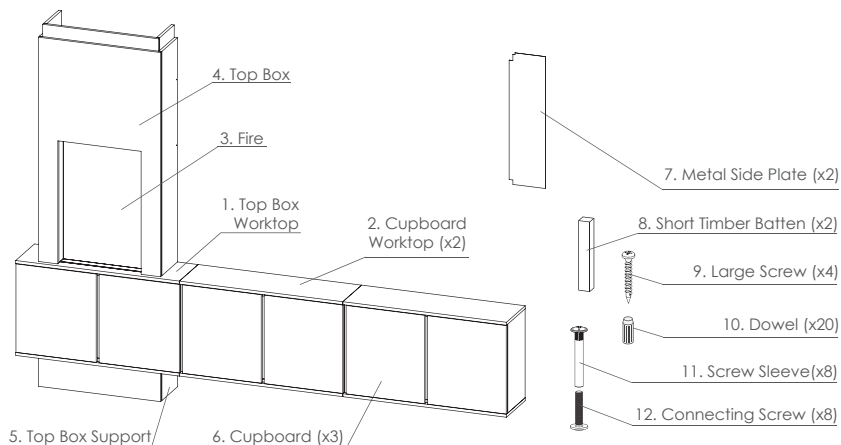
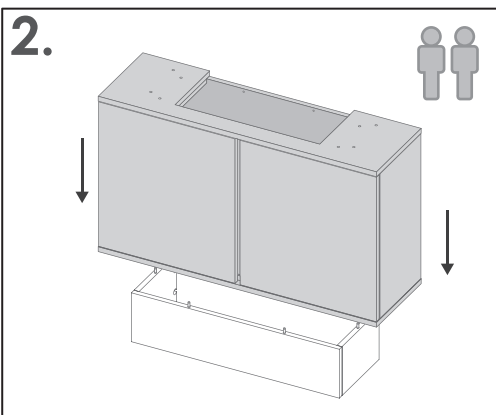


Portrait Floating Media Wall

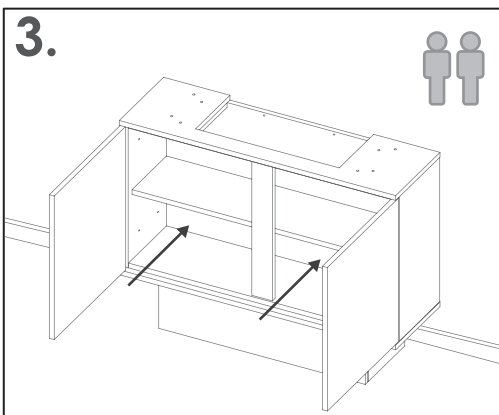
Note - Left-aligned configuration shown below.
To position fire on right, use right-aligned dowel holes and swap side cover panel to right of each standalone cupboard.



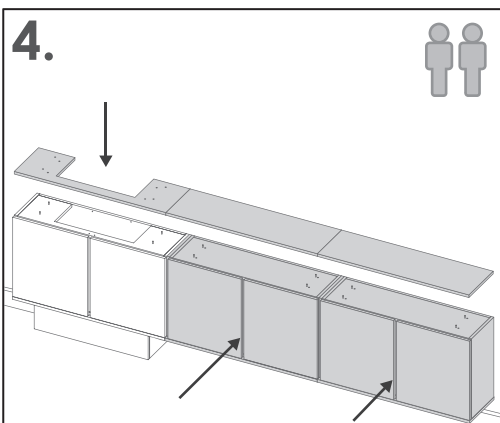
Assemble the top box support as shown above, turning each fixing with a handheld screwdriver to lock parts together. Then, insert 4x the supplied dowels into the corresponding holes.



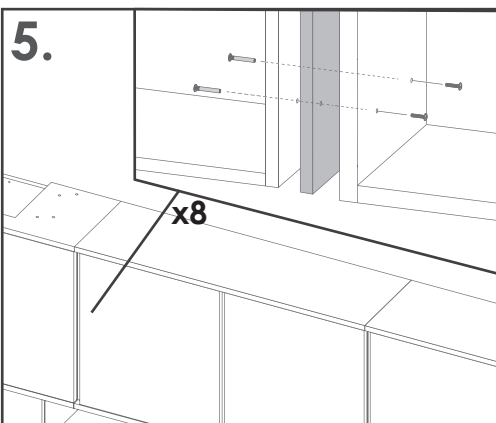
Lift the fire box cupboard (with top cut-out) onto the top box support, in the desired final position.



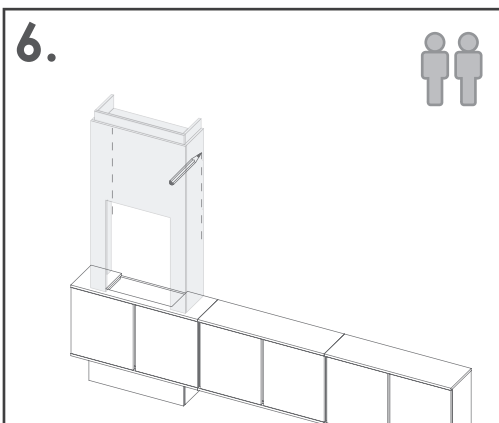
Keeping the cupboard pressed firmly against the wall, use an appropriate fixing method to fix the cupboard to the wall.



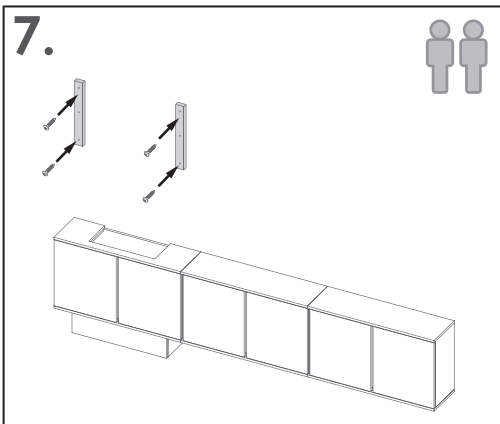
With help, line up the remaining cupboards, keeping them supported and level. Use an appropriate fixing method to fix them to the wall. Then, use the supplied dowels to fix the worktops to the cupboards.



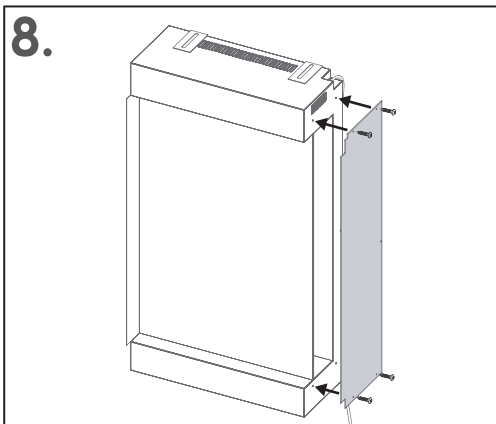
Drill through the appropriate pilot holes inside the cupboard, and use the provided connecting screws and screw sleeves to fix the cupboards to each other and to the cover panel, for additional strength.



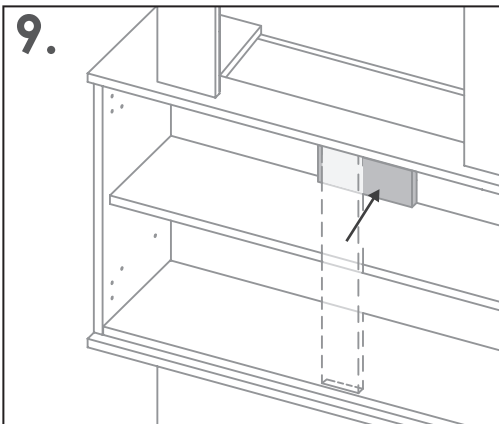
Place dowels into the remaining holes of the fire box worktop. Then, lift the top box onto the cupboard and, using a pencil, mark the wall inside.



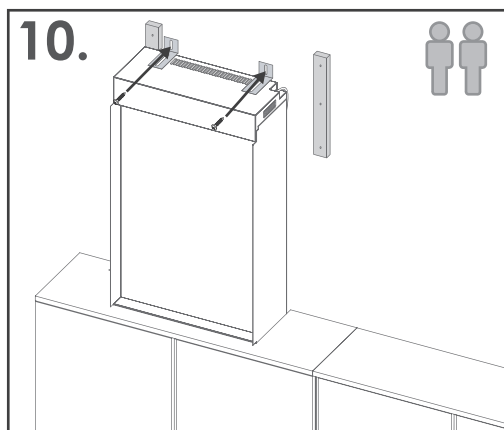
Remove the top box. Then, ensure the markings are level, and use them to fix the supplied 2x battens onto the wall.



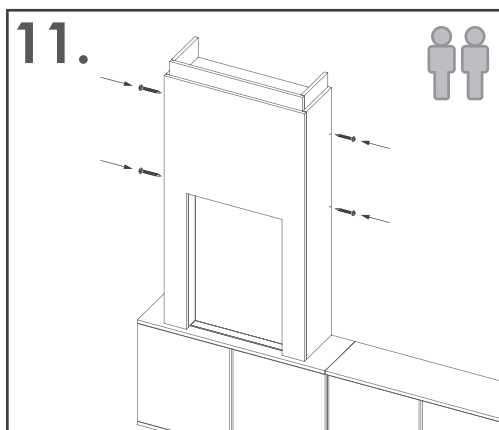
Following the instructions provided with the metal side plates, attach the side plates to the fire. Place the supplied logs/accessories into the fire while the glass sides are removed.



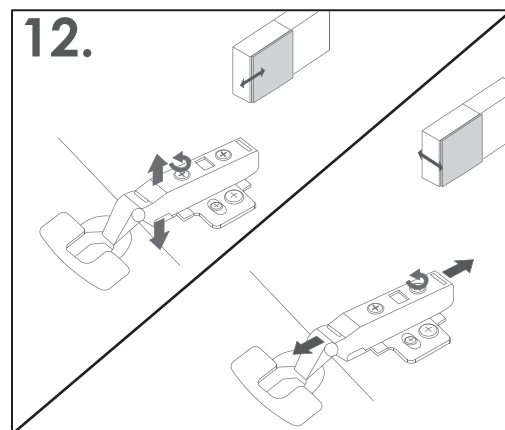
Insert the included support piece into the cupboard as shown above. This will support the fire during installation.



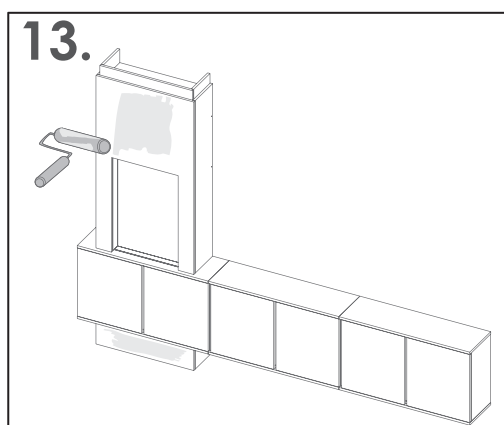
Remove the top brackets from the fire, and rotate them as shown. Then, lift the fire into the top box cupboard and use the brackets to secure the fire to the wall.



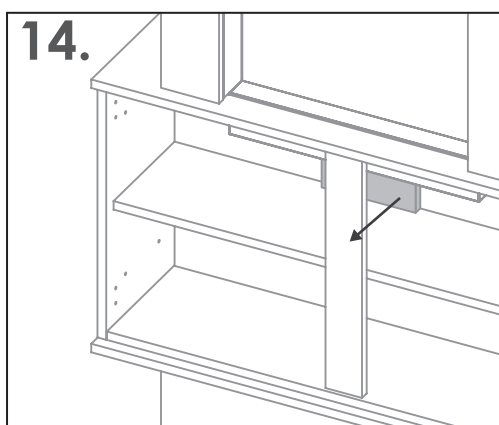
Lift the top box onto the cupboard. Then, using the supplied screws, fix the top box to the battens on the wall.



Using a screwdriver, adjust the hinges on the cupboards to ensure the doors are square and level. Follow the diagram above to adjust the door sideways, forward or backwards.

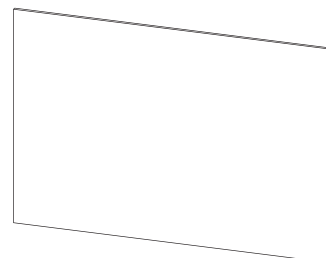


Prepare and paint the unfinished outer surfaces of the media wall in the desired colour.



Remove the temporary support piece from inside the cupboard.

TV Board (if applicable)



If fitting the TV Board, please use an appropriate fixing method to secure the TV board to the wall.

Please note that additional fixings and materials may be required to mount the TV board to the wall in order to achieve your desired effect.

If fitting a TV directly to the TV Board, it is recommended that a flat TV bracket is used. Additional support/fixings may be required if an alternative wall mounting method is desired.

ATTENTION: The TV Board is suitable for wall mounted TV and TV brackets upto 35kg.

Disclaimer: Fired Up Corporation will not accept responsibility for any damages incurred relating to the installation of the TV Board.

CUSTOMER HELPLINE

+44 (0) 3300 882 069

customer.support@firedupcorporation.com



www.firedupcorporation.com

Fired Up Corporation Ltd
Fired Up Buildings
HD1 3LF, UK

Fired Up Corporation
(Ireland) Ltd
71, D02 P593, Dublin