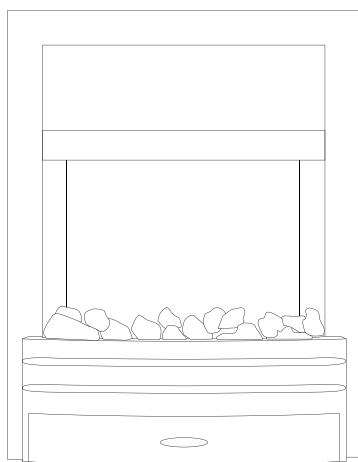


# Use and Care Manual Eclipse Electric Fire



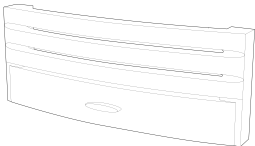

## **Please keep these instructions for further use**

These instructions are for your safety. Please read through them thoroughly before use and retain for future reference. Failure to follow them could cause a heater malfunction resulting in serious injury and/or property damage.



### **PARTS SUPPLIED**

Please ensure you have ALL the correct parts before installing the unit.

ECLIPSE FIRE		
Description	Image	Qty
Electric fire		x 1
Trim		x 1
Fret		x 1
Pebble / Coal Set		x 1

### **PARTS REQUIRED**

If installing into a wooden back panel, 8 screws will be required (3.5mm x 12mm or similar size).

### **TOOLS REQUIRED**

A crosshead screwdriver (preferably electric)

# Use and Care Manual Eclipse Electric Fire

---

## INTRODUCTION

Thank you for choosing this electric flame effect fire. The fire is designed to meet the most stringent quality, performance, and safety requirements. This guide aims to improve your understanding and appreciation of your new fire by providing simple and informative instructions to enable you to install it and to ensure that you benefit from the excellent performance and features it has to offer.

## HANDLING

Before continuing any further with the installation of this fire please read the following:

- One person should be sufficient to lift the fire. If for any reason it is considered too heavy then obtain assistance.
- When lifting always keep your back straight. Bend your legs and not your back.
- Avoid twisting at the waist. It is better to reposition your feet.
- Avoid upper body / top heavy bending. Always bend from the knees rather than the waist. Do not lean forward or sideways whilst handling the heater.
- Always grip with the palm of the hand. Do not use the tips of fingers for support.
- Always keep the fire as close to the body as possible. This will minimize the cantilever action.
- Use gloves to provide additional grip.
- Always use assistance if required.

## UNPACKING THE PRODUCT

The unit is supplied in a single package carton. Carefully unpack the product using the following procedure:

- Ensure that the product is in the correct position with the carton wording legible.
- Carefully pierce the sellotape and open the carton
- Carefully lift the product from the carton, and stand on the floor
- Remove the protective plastic bag from the fire
- Remove the protective cover from the plug
- Lift out the accessories box from the main carton
- Open the accessories box, unwrap the protective foam

## ELECTRICAL SPECIFICATIONS

### Important Electrical Safety

The fire must not be located under an electrical socket; the socket must always be accessible in order to disconnect the heater from the electrical supply for maintenance and cleaning.

# Use and Care Manual

## Eclipse Electric Fire

---

### Important!

- Do not spray liquids directly onto any surface of the unit.
- The electric suite is designed for household and indoor use only.
- This fire must be earthed. The mains supply must be safely routed from the fire to an electrical socket.
- When the appliance is not in use and before cleaning, unplug the appliance from the outlet.
- If the supply cord is damaged, it must be replaced by the manufacturer or its service agent or a similarly qualified person in order to avoid a hazard.
- To protect against the risk of an electric shock, do not immerse the supply cord or plug in water or other liquid.
- This appliance is not intended for use by persons (including children) with reduced physical, sensory or mental capabilities, or lack of experience and knowledge, unless they have had supervision or instruction concerning use of the appliance by a person responsible for their safety.
- Children should be supervised to ensure that they do not play with the appliance.
- The plug must be accessible after installation to allow for isolation in an emergency.
- Warning: In order to avoid overheating, do not cover the heater



**WARNING: Do Not Cover**

**Note:** Any new wiring must be done in compliance with local and national codes and other applicable regulations in order to reduce the risk of fire, electric shock, or other injuries.

**Note:** When the fire is turned on for the first time, it may release a slight, harmless odour. This odour is a normal occurrence caused by the initial heating of the internal heating elements and should not occur again, unless the appliance is unused for a period of time.

# Use and Care Manual

## Eclipse Electric Fire

### CAUTIONS

<b>Do's</b>	<ul style="list-style-type: none"><li>• Always install the fire in accordance with this guide. If in doubt obtain expert advice.</li></ul>
	<ul style="list-style-type: none"><li>• Always make sure the electrical socket is accessible and located adjacent to, but not above the fire.</li></ul>
	<ul style="list-style-type: none"><li>• Always disconnect the fire from the electrical supply before carrying out cleaning and/or maintenance.</li></ul>
	<ul style="list-style-type: none"><li>• Always make sure the fire is firmly secured.</li></ul>
<b>Don'ts</b>	<ul style="list-style-type: none"><li>• Never leave children unsupervised in a room where the fire is ON and unguarded.</li></ul>
	<ul style="list-style-type: none"><li>• Never obstruct or cover the fan outlet or force items into fire openings.</li></ul>
	<ul style="list-style-type: none"><li>• Never install or use the fire anywhere where water is in use, i.e. Bathrooms, Kitchens, Shower Rooms, and Swimming Pool etc.</li></ul>
	<ul style="list-style-type: none"><li>• Never use aerosols or steam cleaners on or around the fire.</li></ul>
	<ul style="list-style-type: none"><li>• Never route the mains supply cord under carpet etc.</li></ul>
	<ul style="list-style-type: none"><li>• Never install the fire close to curtains or combustible materials.</li></ul>
	<ul style="list-style-type: none"><li>• Never use the fire to dry clothes etc.</li></ul>
	<ul style="list-style-type: none"><li>• Never sit or stand on the fire.</li></ul>
	<ul style="list-style-type: none"><li>• Never cut off the plug and hard wire into a fixed fused spur.</li></ul>

### SAFETY CUT-OUT SYSTEM



**DO NOT OBSTRUCT THE AIR VENTS OF THE ELECTRIC HEATER.**

This appliance has a 'self resetting' safety cut out system that will activate if the air inlets or outlets are obstructed. If the electric fire is obstructed, it will overheat. When the temperature exceeds 85 degrees C, the heater element will cut out, until a safe temperature is regained.



**THIS PRODUCT MUST BE INSTALLED CORRECTLY. FAILURE TO DO SO MAY CAUSE DAMAGE TO YOUR PRODUCT AND/OR YOUR SURROUNDINGS**

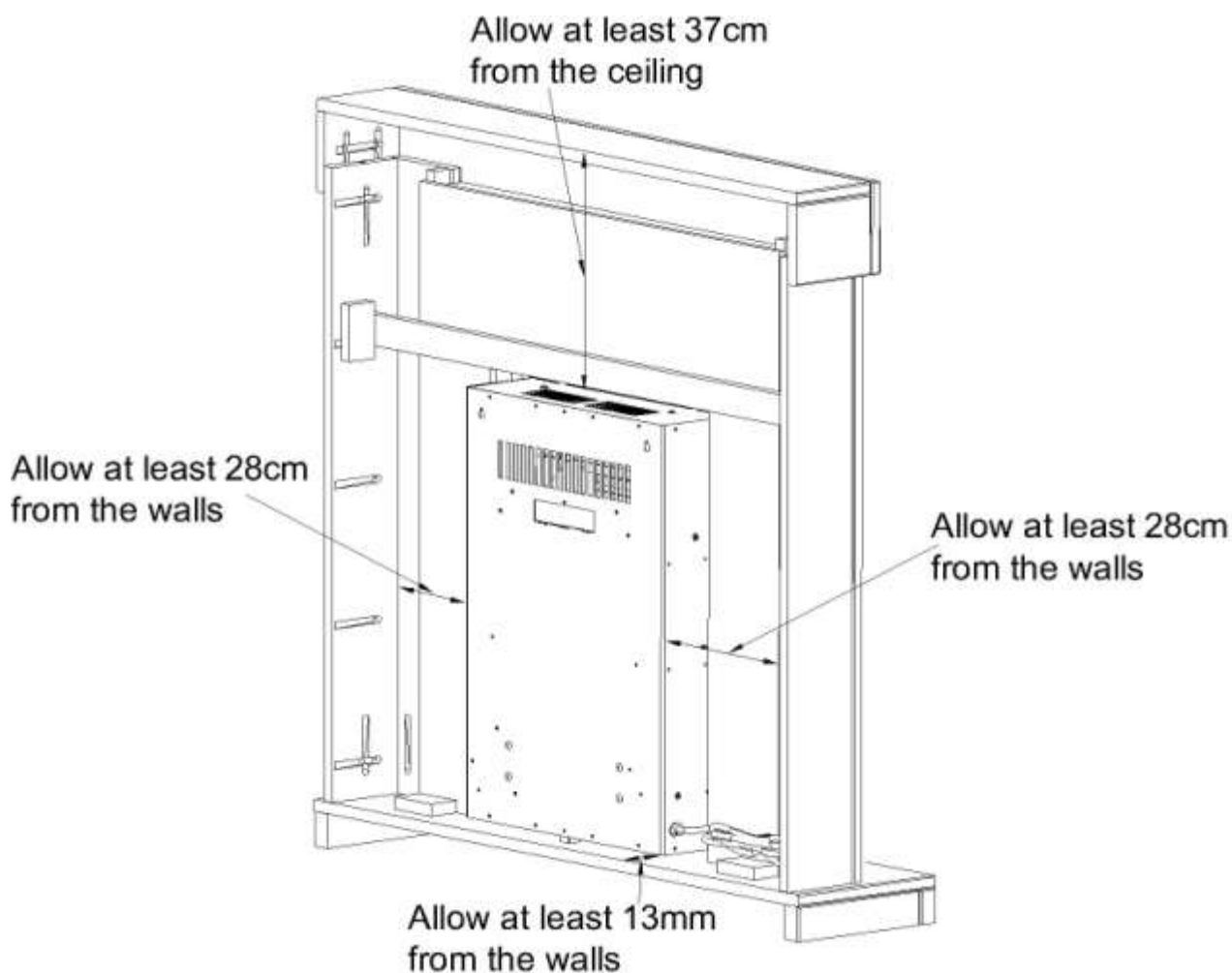
# Use and Care Manual Eclipse Electric Fire

## INSTALLATION REQUIREMENTS

This appliance is suitable for installation into all surrounds with an opening of 420mm x 570mm (16.5" x 22.5").

Please ensure that the minimum amount of space is left around the electric fire when it is installed. See the image below for details.

If in doubt, please seek advice from a suitably qualified tradesman.



This appliance is suitable for installation into surrounds with an opening of 420mm x 570mm (16.5" x 22.5").

**WARNING:** Make sure the appliance's air inlets are not blocked to allow for ventilation.

**NOTE:** Ensure the surround is properly fastened to the wall after installing the fire.

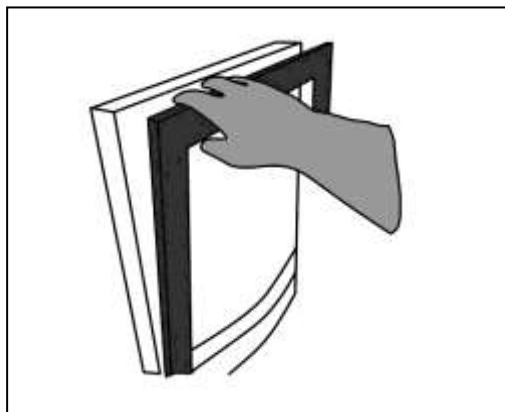
# Use and Care Manual

## Eclipse Electric Fire

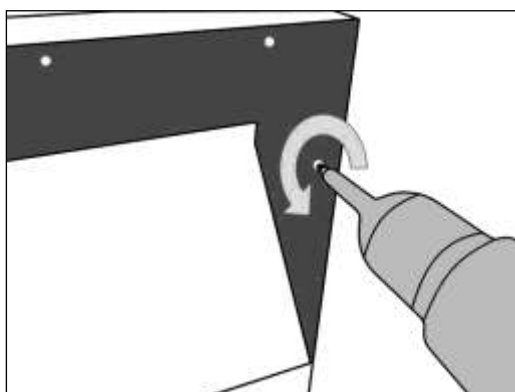
### **INSTALLATION of the Eclipse Fire (into a wooden back panel)**

If installing into a stone or laminate back panel, please refer to page 7.

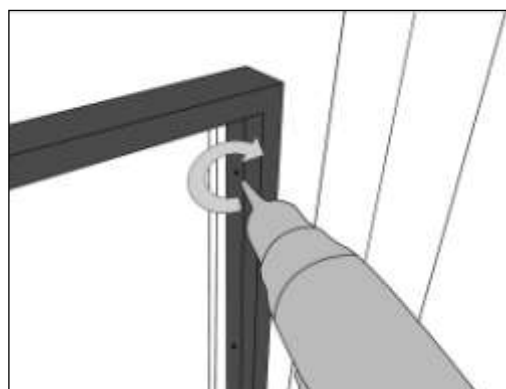
**NOTE: Please take care when installing the fire as some edges may be sharp.**



1) Unclip the magnetised trim



2) Unscrew the 8 screws to detach the spacer



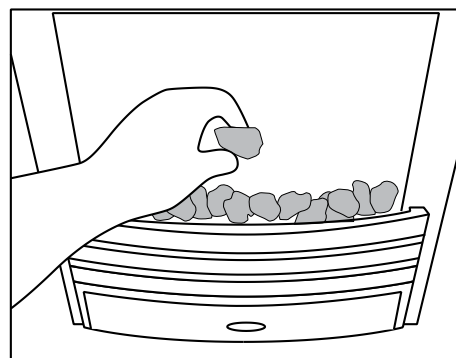
3) Attach the spacer to the surround using 8 x (3.5 x 12mm) screws or similar size

4) Offer the fire up to the spacer. Check the supply cable is not trapped under the fire such that it may cause it to be damaged.

5) Reattach the fire using the 8 screws, then refit the TRIM using the opposite procedure as illustrated in Actions 1 & 2.

6) Place the fret in front of the fire

7) Open the pebble set and place the pebbles on the fuel bed randomly



# Use and Care Manual

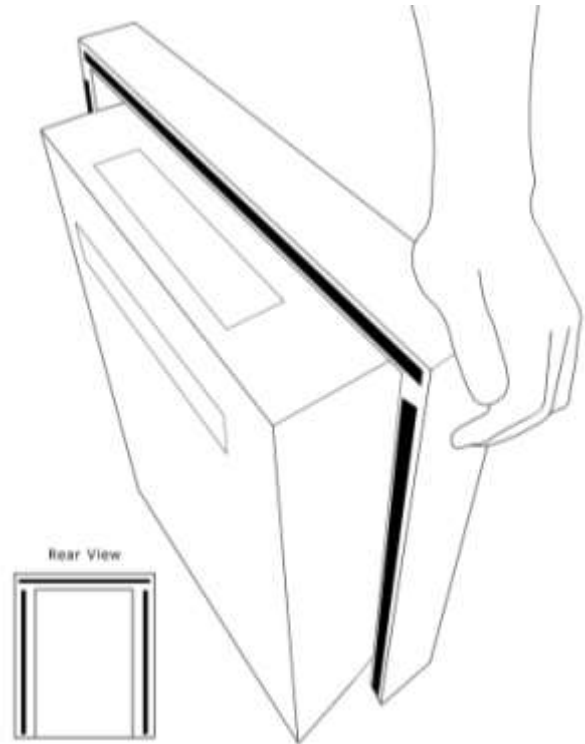
## Eclipse Electric Fire

### INSTALLATION of the Eclipse Fire (into a stone or laminate back panel)

1) Stick one side of the Neoprene Strip (x3) to the back of the electric fire (as shown right). Position the fire within the surround and peel back the other side of the Neoprene Strips.

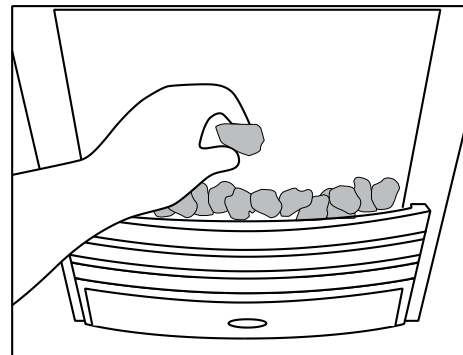
2) Check the supply cable is not trapped under the fire such that it may cause it to be damaged

3) Firmly push the electric fire against the surround until it is secure.



4) Place the fret in front of the fire

5) Open the pebble set and place the pebbles on the fuel bed randomly



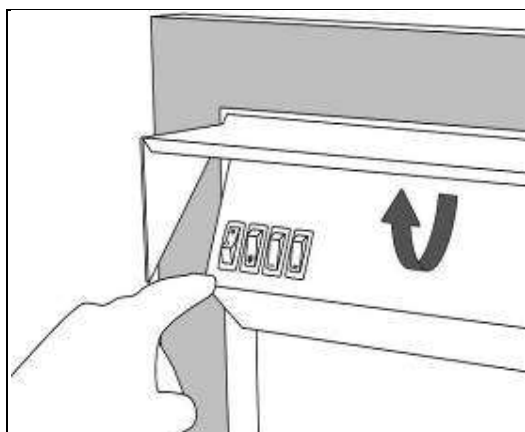
# Use and Care Manual

## Eclipse Electric Fire

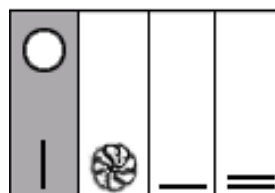
### OPERATING THE ELECTRIC FIRE

The appliance is controlled using 4 switches, located **under the hood of the fire**. A switch is in the ON position when the side with the markings on (i.e. I, or II) is 'pressed in'

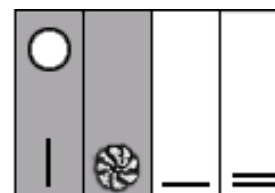
Use the following sequence to operate. The **grey** represents a 'pressed switch.'



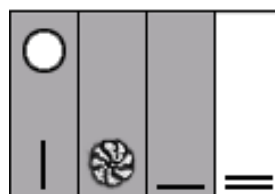
Controls located under the hood



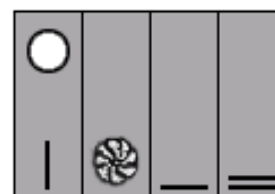
On/Off with Effect only



Cool Air Blow & Effect



1kW Heat setting



2kW Heat Setting

### MAINTENANCE

Please allow the unit to cool down completely before cleaning.

There are no specific requirements for the care of this unit, other than general cleaning.

- Metallic (silver/chromed effect) fires can be cleaned using a cloth and propriety cleaner. Other features (non-metallic) can be cleaned using a clean moistened cloth and finally wiped with a dry cloth.
- If the supply cord is damaged it must be replaced by a suitably qualified person.
- The area around the fire should be kept free from animal hair, lint and other extraneous material that may be drawn into workings of the appliance and could affect its performance.



# Use and Care Manual

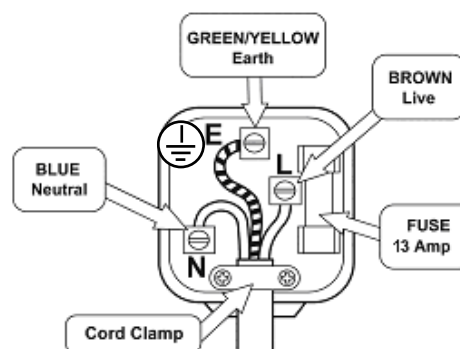
## Eclipse Electric Fire

### PLUG REPLACEMENT (For product fitted with BS Plug)

- This appliance is supplied with a BS1363 3 pin plug fitted with a 13 Amp fuse. Should the fuse require replacement, it must be replaced with a fuse rated at **13 Amp** and approved to BS1362.
- In the event the mains plug has to be removed/replaced for any reason, please note:

The wires in the mains lead on this appliance are coloured in accordance with the following code:

Green and Yellow	-	Earth
Blue	-	Neutral
Brown	-	Live



### THIS APPLIANCE MUST BE EARTHED

As the colours may not correspond with the markings identifying the terminals in your plug proceed as follows.

- The green and yellow wire must be connected to the terminal in the plug which is marked with the earth symbol (⏏) or with the letter E or coloured green & yellow.
- The blue wire must be connected to the terminal marked N or coloured black.
- The brown wire must be connected to the terminal marked L or coloured red.

Important - any cut off plug should be disposed of safely to prevent hazard. There is a danger of electric shock if a cut off plug is inserted into a socket outlet.

### APPLIANCE DATA

- Supply Voltage; 220 – 240V~, 50Hz
- Rated Power: 2000W
- Fuse (BS Plug) Rating: 13 AMP
- Lighting: 5W LED Array (non serviceable)

# Use and Care Manual Eclipse Electric Fire

## CONFORMITY WITH DIRECTIVES

Conforms with relevant European Directives



## ENVIRONMENTAL PROTECTION

- (WEEE) Waste Electrical and Electronic Equipment

Waste electrical products should not be disposed of with household waste. Please recycle where facilities exist. Check with your Local Authority or retailer for recycling advice.



- (RoHS) restriction of the use of certain hazardous substances in electrical and electronic equipment

This Directive bans the placing on the EU market of new electrical and electronic equipment containing more than agreed levels of lead, cadmium, mercury, hexavalent chromium, polybrominated biphenyl (PBB) and polybrominated diphenyl ether (PBDE) flame retardants.