

Adam

SELF ASSEMBLY MANTEL
WITH DOWN LIGHTS

www.adamfires.co.uk

These notes must be read before installation

These instructions are for your safety. Please read through them thoroughly before use and retain for future reference. Failure to follow them could cause injury and/or property damage.

CONTENTS

SECTION 01

Cautions	03
Introduction	04
Handling	04
Unpacking	04

SECTION 02

Tools required	05
Identification	05
Parts supplied	05
Fixings pack	06

SECTION 03

Assembly	07-09
Specification	10
Guarantee	12
Contacts	12

CAUTIONS

DO'S

-
- Always assemble and install the product in accordance with this guide. If in doubt obtain expert advice.
-
- Always make sure the product is firmly secured.
-
- Always ensure the product is assembled in an area that is free from dust, grease, or liquids.
-
- Always ensure that the correct tools are used to install/assemble the product.
-
- Always make sure the mantel is firmly secured to the wall when complete
-

DON'TS

-
- Never install or use an electric fireplace anywhere where water is in use, i.e. Bathrooms, Kitchens, Shower Rooms, Swimming Pools etc.
-
- Never use aerosols or steam cleaners on or around the suite.
-
- Never install a fireplace close to curtains or combustible materials.
-
- Never sit or stand on the product.
-
- Never lean or put weight on the product.
-

INTRODUCTION

Thank you for choosing this product. The product is designed to meet the most stringent quality, performance, and safety requirements. This guide aims to improve your understanding and appreciation of your new fire surround by providing simple and informative assembly instructions.

HANDLING

Before continuing any further with the assembly and installation of this fire surround please read the following:

- When lifting always keep your back straight. Bend your legs and not your back.
- Avoid twisting at the waist. It is better to reposition your feet.
- Avoid upper body / top heavy bending. Always bend from the knees rather than the waist.
- Do not lean forward or sideways whilst handling the product.
- Always grip with the palm of the hand. Do not use the tips of fingers for support.
- Always keep the product as close to the body as possible. This will prevent unnecessary and undue strain on the body.
- Use gloves to provide additional grip.

UNPACKING

Carefully unpack the product using the following procedure:

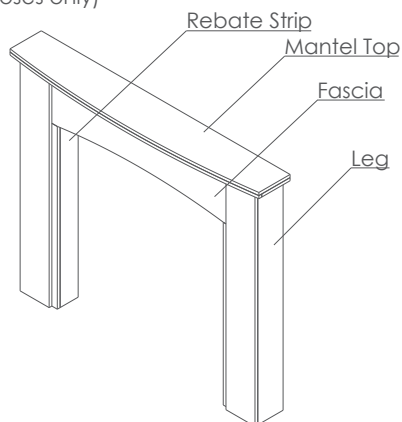
- Carefully lift the parts/product out of the box
- Carefully remove the protective wrapping from the parts
- Locate the fixing pack and put aside

TOOLS REQUIRED

Crosshead screw driver (Electric screw driver recommended)

IDENTIFICATION

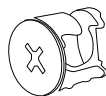
(Image for illustrative purposes only)



PARTS SUPPLIED

Please identify the parts listed below and ensure you have **ALL** the correct parts before assembling the unit.

Description	Illustration	Qty
Legs (Left & Right)		x 2
Fascia		x 1
Rebate Strips (Left & Right)		x 2
Mantel Top		x 1

FIXINGS PACK**10x** Short Screw,**6x** Long Screw,**5x** Cam lock,**5x** Cam lock screw

Note: your product will have an additional set of instructions and fixings pack provided for securing the mantel to the wall. Please keep these safely on one side until required.

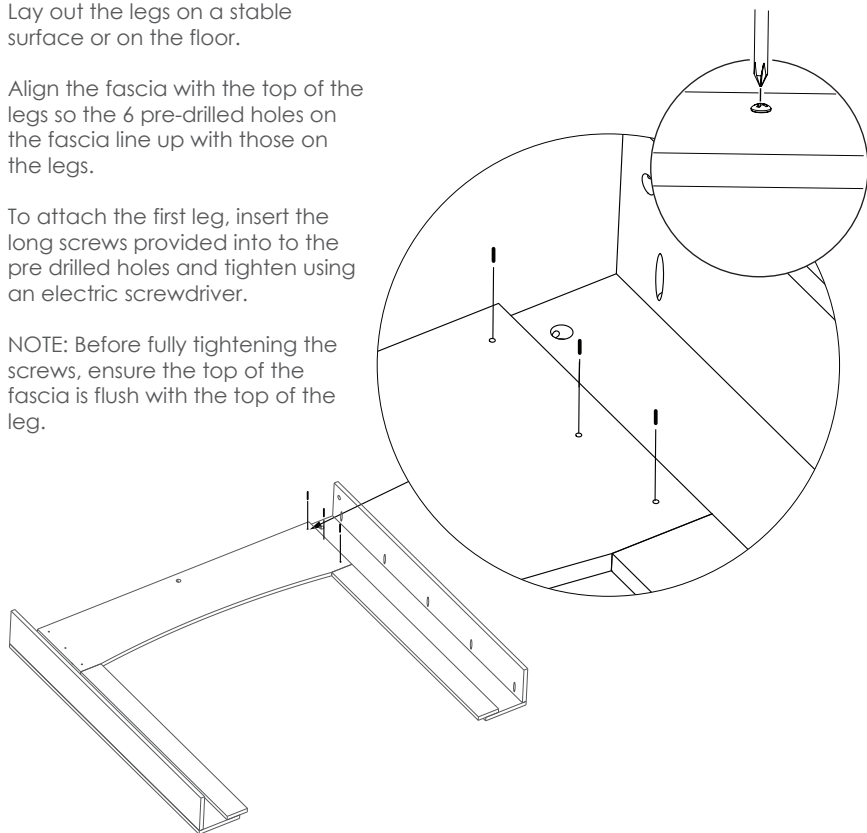
ASSEMBLY

1. Lay out the legs on a stable surface or on the floor.

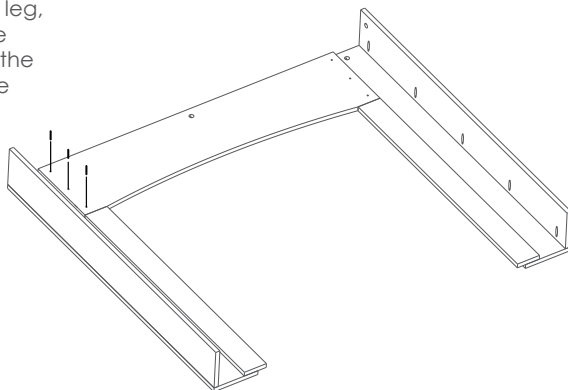
Align the fascia with the top of the legs so the 6 pre-drilled holes on the fascia line up with those on the legs.

To attach the first leg, insert the long screws provided into the pre-drilled holes and tighten using an electric screwdriver.

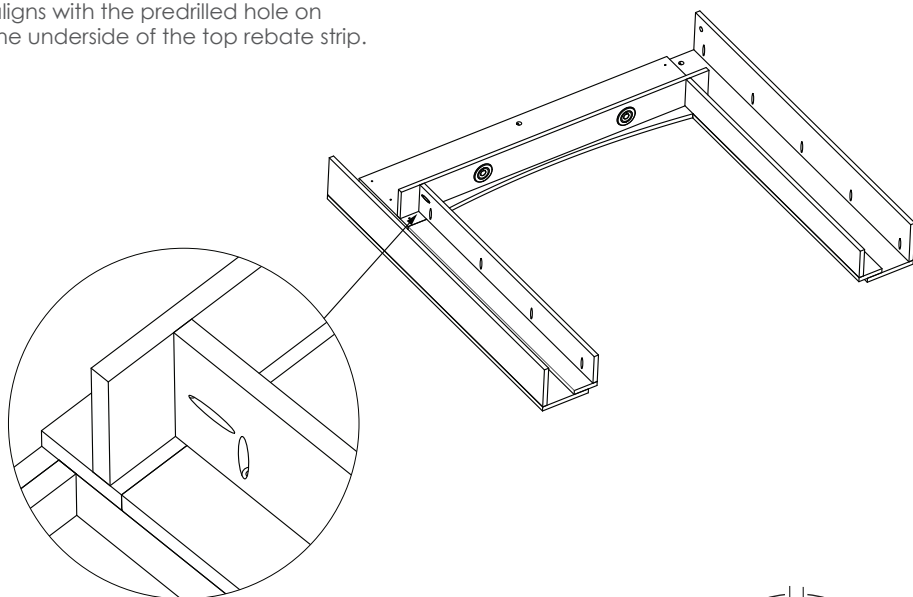
NOTE: Before fully tightening the screws, ensure the top of the fascia is flush with the top of the leg.



2. Repeat step 1 with the other leg, again ensuring the top of the fascia is flush with the top of the leg before fully tightening the screws.



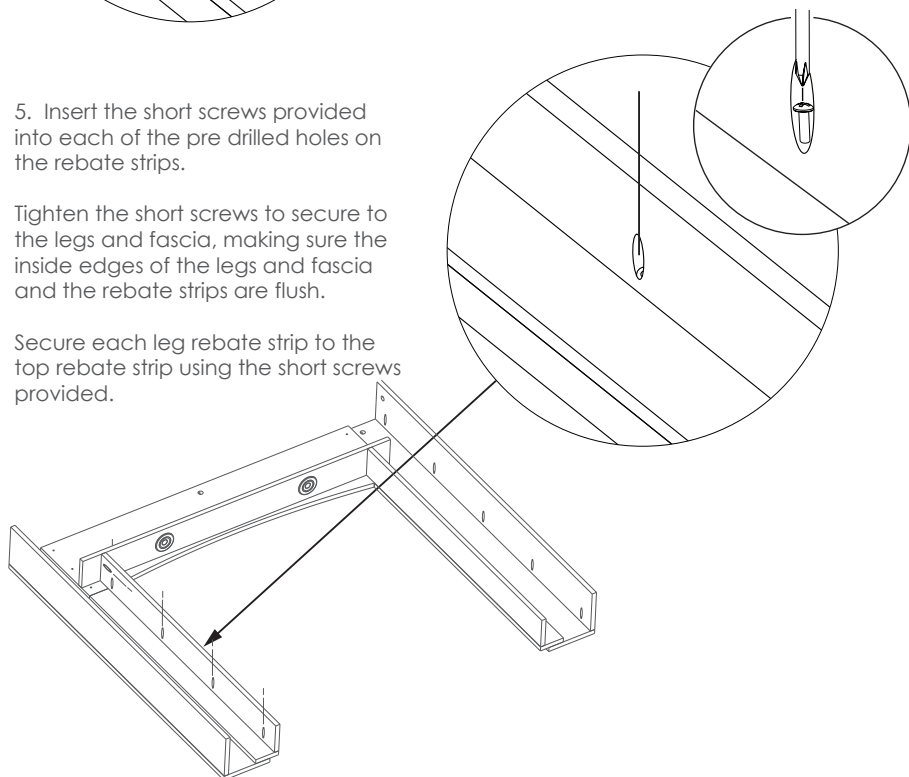
3. Align the rebate strips over the pre drilled holes on the inside of each leg and the fascia. Make sure the slot at the top of each rebate strip aligns with the predrilled hole on the underside of the top rebate strip.



5. Insert the short screws provided into each of the pre drilled holes on the rebate strips.

Tighten the short screws to secure to the legs and fascia, making sure the inside edges of the legs and fascia and the rebate strips are flush.

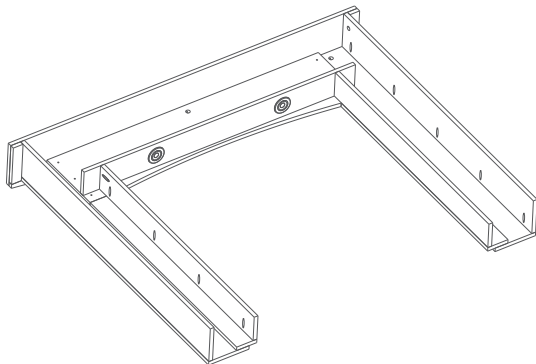
Secure each leg rebate strip to the top rebate strip using the short screws provided.



5. Refer to the Cam Lock assembly illustrations at the bottom of the page for instruction on how to assemble the cam locked parts.

Screw the cam lock screws into the predrilled holes on the underside of the mantel top using a screw driver.

Line up the screws on the mantel top with the holes in the top of the legs and fascia.

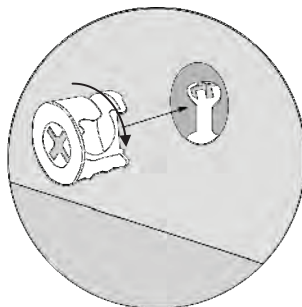
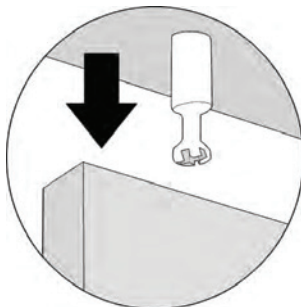
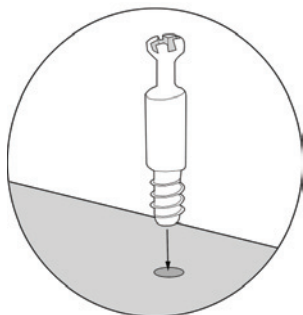


Attach the mantel top by pushing the screws all the way in to the holes, then insert a cam lock into the predrilled holes on the fascia/legs.

Using a screwdriver, tighten the cam locks around the cam lock screws to attach the mantel top to the product.

IMPORTANT: Ensure the supply cord for the downlights is not trapped or damaged and is able to run freely along the inside of one of the legs on the mantel.

Cam Lock Assembly



SPECIFICATION

Dimensions (mm)	-	H1145 x W1372 x D220
Downlight power	-	1W per downlight
Downlight supply cord	-	3m
Fuse	-	3 Amp

GUARANTEE

For your convenience, you are not required to complete a form and return it to us in order to validate your guarantee. However, please ensure that you retain your receipt which will act as both proof of purchase and a guarantee validation document. **We recommend that you attach your receipt to this documentation.**

Your product carries a 12 month guarantee from the date that the original purchaser receives it. If your product fails to operate to its specification, due to faulty workmanship or materials during the guarantee period, we will either repair or replace the product. We will use our discretion to determine whether to offer a repair or provide a replacement. The product will not be covered by the guarantee if it has been misused, transformed, modified or altered in any way.

If your product fails within the guarantee period please ensure that you have all necessary documentation available including proof of purchase (receipt or invoice with serial number, location and date of purchase) in addition to all original undamaged packaging and leaflets etc. It is strongly recommended that you inspect your product carefully before it is used or installed. For full details of your product you should refer to the instruction manual which accompanies the product. You are strongly advised to read this manual carefully in its entirety and to retain it for future reference.

This product guarantee does not affect your statutory rights.

CUSTOMER HELPLINE

 08448 809 301

 customer.support@firedupgroup.co.uk



Fired Up Corporation Ltd.
Fired Up Buildings
St Thomas Road
Huddersfield
HD1 3LF
United Kingdom

www.firedupgroup.co.uk

