

Operating & Installation Manual

AX

Multifuel Stoves



The AX Multifuel Stove Range

PLEASE RETAIN THIS GUIDE FOR FUTURE REFERENCE

BK132

Rev 03
August 2011
Part No. AFS1574

AX1M - S2
AX2M - S2

Contents

	Page No.
<u>INTRODUCTION</u>	
Warning Notice	3
Safety Notices	4
<u>INSTALLATION</u>	
Fitting The Flue Outlet & Hotplate	4
Technical data	5
Fitting the grate	6
Firebox Liner Panels	7
Final Check	8
<u>OPERATION</u>	
Air wash control	9
Primary air control	9
Multipurpose operating tool / Ash pan	10
<u>MAINTENANCE</u>	
Cleaning the stove	11
Summer Storage	12
Adjusting the Door Hinges	12
Fuel retainer	12
AX1 Spare Parts Diagram	13
AX2 Spare Parts Diagram	14
<u>GUARANTEE</u>	15
<u>FINAL FACTORY CHECK</u>	16

WARNING

IT IS A LEGAL REQUIREMENT THAT THE INSTALLATION OF ALL NEW OR REPLACEMENT, WOOD OR SOLIDFUEL HEATING APPLIANCES ARE REQUIRED TO OBTAIN BUILDING CONTROL APPROVAL FROM YOUR LOCAL AUTHORITY OR THE INSTALLATION WORK MUST BE CARRIED OUT THROUGH A GOVERNMENT APPROVED COMPETENT PERSONS SCHEME SUCH AS OPERATED BY HETAS.

IF IN DOUBT, CONTACT HETAS LIMITED
TELEPHONE NUMBER : 0845 634 5626
www.hetas.co.uk

THIS STOVE MUST NOT BE CONNECTED
TO A SHARED FLUE SYSTEM

TO ALL USERS
PETROLEUM COKE
SOME OF WHOSE BRAND NAMES ARE
‘CALCO’, ‘PETROCOKE’ AND ‘WONDERCO’
MUST NOT BE BURNED IN THIS APPLIANCE

BITUMINOUS HOUSE COAL
SHOULD NEVER BE USED IN YOUR STOVE

TO USE THESE FUELS WILL INVALIDATE
THE APPLIANCE GUARANTEE.

IF IN DOUBT CONTACT THE SOLID FUEL ASSOCIATION
TELEPHONE NUMBER 0845 601 4406
www.solidfuel.co.uk

INTRODUCTION

SAFETY

A fireguard conforming to BS 8423:2002 should be used in the presence of children and old or infirm people.
Please note, this appliance should be used with the fire door closed at all times except when re-fuelling or de-ashing.

Do not use aerosol sprays or any other flammable materials near the appliance under fire.

Do not fit an extractor fan in the same room as the appliance.

Fire cement is caustic, hand and eye protection should always be worn, prolonged contact with the skin should be avoided.

The manufacturer will not be responsible for any consequential or incidental loss or injury however caused.

Before continuing any further, with the installation of this appliance please read the following guide to manual handling.

- Always obtain assistance when lifting the appliance
- When lifting always keep your back straight, bend your legs not your back
- Avoid twisting at the waist. It is better to reposition your feet.
- Avoid upper body/top heavy bending. Do not lean forwards or sideways when handling the fire
- Always grip with the palms of your hands do not use your fingertips for support
- Always keep the stove as close to the body as possible as this will minimise the cantilever action.
- Use gloves to provide additional grip.

FITTING THE FLUE OUTLET AND HOT PLATE

The flue outlet spigot is found packed inside the appliance. The hot plate (blanking plate) is supplied fitted to the top opening and is removed by turning anti-clockwise (as is the flue outlet).

Smear a very thin layer of fire cement on the mating faces of the flue outlet and the hot plate. Fit the outlet to the appliance in the desired position.

Lock into place by rotating clockwise and tighten by tapping with a block of wood and mallet from inside of the appliance. Similarly, fit the hot plate (blanking plate) to the unused opening. Clean off any surplus fire cement.

Place appliance on the hearth and make sure that it is level and does not rock.

Connect the chimney ensuring all joints are sealed with fire cement.

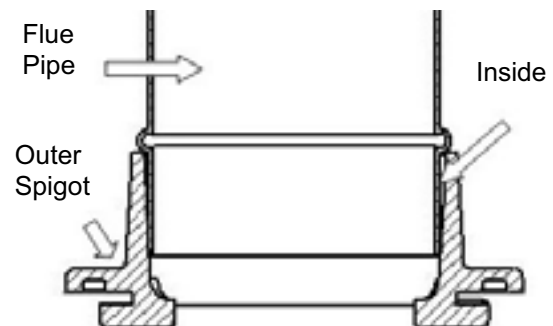
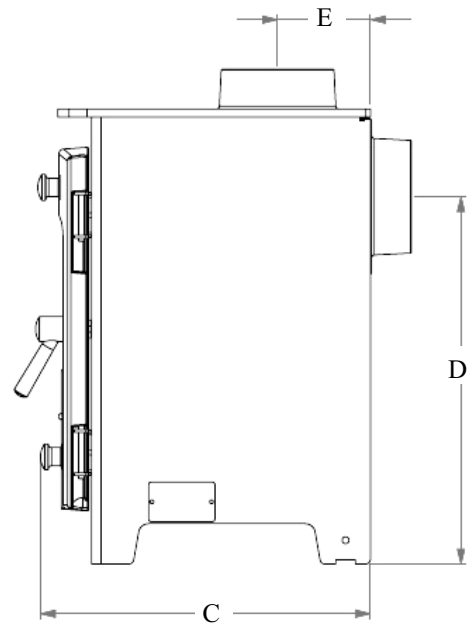
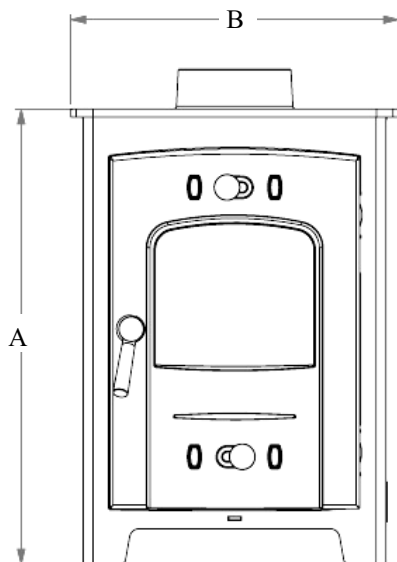


Fig. 1. Flue & Spigot Fitting

Note : The flue pipe must be fitted inside the outlet spigot. Failure to do so could result in the spillage of condensation running down the flue.

TECHNICAL DATA

TECHNICAL DATA	AX1 Multifuel	AX2 Multifuel
Room Heater Only Output (kW)	1 - 4	1 - 5
Height (mm) 'A'	458	475
Width (mm) 'B'	330	370
Depth (mm) 'C'	323	333
Height to Centre of Rear Flue (mm) 'D'	370	387
Depth from Back to Centre of Flue (mm) 'E'	93.5	93.5
Flue Diameter (mm / Inches)	102 (4")	102 (4")
Weight Packed (Kg)	39.5	41.5



INSTALLATION

FITTING THE GRATE

Note : The grate bars are factory assembled, however during transit, they may have been dislodged. Please see the instructions below on grate assembly.

Grate

The grates in the AX1 / 2 stoves, comprise of a series of 5 cast iron grate bars, seated on a pair of combs. All bars in the grate are identical, the bar is fitted with the ends of the bars marked 'H' sitting on the front comb, and the ends marked 'L' sitting on the rear grate bar comb.

See image below.



FIREBOX LINER PANELS

The AX range of stoves use firebox liner panels to the sides and back. The throat plate sits on top of the sides and rear panels. These should come fitted to your stove, if however they are not, proceed as follows to fit them.

- Open the fire door.
- Remove the fuel retainer by lifting free of the out from the front brace
- Set the smaller liner into the back of the firebox.
- Insert side liner panels. (See Fig. 2)
- Fit the throat plate with the projecting lugs sitting on top of the side liners. The long centre tab on the back edge rests on the rear liner. The shorter turn down tabs against the vertical face. (See Fig. 3 & 4)
- Replace the front fuel retainer.

Note: *Neither the rear firebox liners nor the side firebox liners are 'handed', both faces are suitable for direct contact with the fire bed.*

Note : *Cracking of the lining panels does not effect efficiency.*

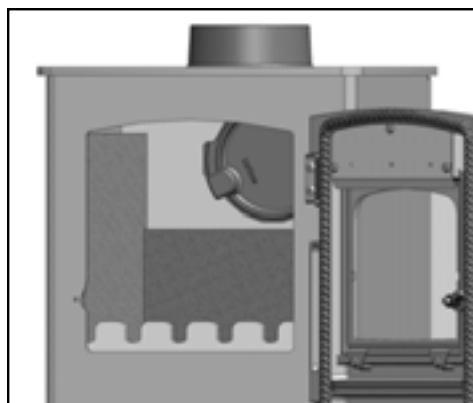


Fig. 2. Liners Inserted

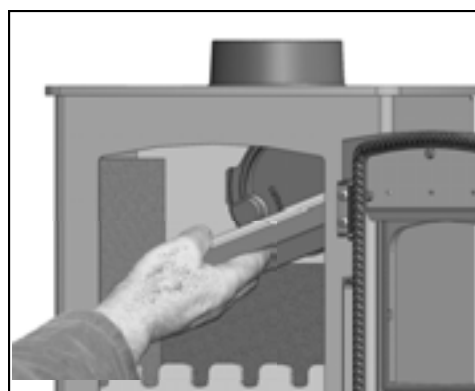


Fig. 3. Inserting The Throat Plate

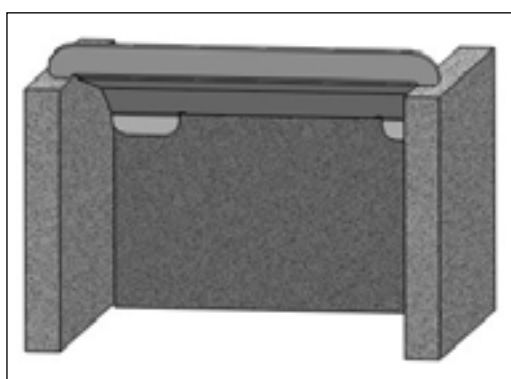


Fig. 5. Overall View Of Liners & Throat Plate Assembly

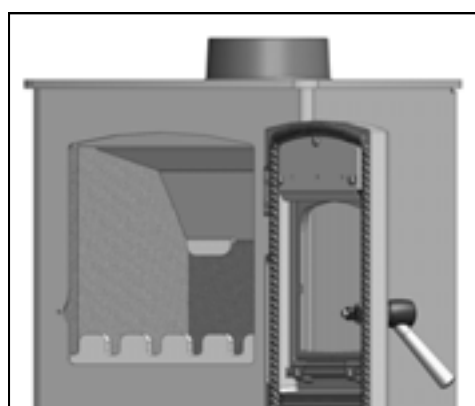


Fig. 4. Liners & Throat Plate Correctly Fitted

INSTALLATION

FINAL CHECK

Before handing over the installation to the customer it is a requirement under Document J the appliance is lit and the functioning of the chimney system is checked for satisfactory operation.

- **Be sure that the chimney is operating and ALL smoke and fumes are vented to the atmosphere through the chimney terminal.**
- **Check all joints and seals.**
- **Clean the outside of the appliance to prevent any stains becoming burnt on.**
- **Check the flue draught which should read 1 - 2mmH₂O, or 0.1 - 0.2 mbar.**
- **Explain the controls and operation of the appliance to the customer.**
- **Ensure all aspects of the installation of the stove conform to current building regulations and the installation is reported to your local building control department.**

Note - All local regulation , including those referring to National and European standards need to be complied with, when installing the appliance. We strongly advise that installation should only be carried out by a qualified Solid Fuel Heating Engineer, covered by the HETAS scheme , as installation by non-qualified persons may affect the stove operational safety and the product guarantee.

The building Regulations for England and Wales 2000 ref Approved Document J 2010 edition (issued by the DTLR). The Building Standard (Scotland) (Consolidation) Regulations. Detailed recommendations for installation of Appliances, chimneys and flues are outlined in the current issue of the following British Standards BS6461, BS8303 and BS4543

Full details of UK installation regulations can be obtained from the following web site:-
www.planningportal.gov.uk/uploads/br/BR_PDF_ADJ_2010.pdf

OPERATING INSTRUCTIONS

AIR INLET CONTROLS

The AX range of stoves have two air inlet controls.

The primary air inlet providing under draught to the base of the fire chamber through the control slider located under the window of the fire door.

The air wash system, so called because its pre-heated high speed air, washes across the inner face of the door glass, keeping it clear. This also provides an over draught to the fuel bed.

PRIMARY AIR

Air enters the appliance through the control on the bottom of the fire door. The AX 1 & 2 has a single control knob which slides left to right. Sliding the knob to the Right, see Fig.6, will increase the amount of air intake to the stove. To Decrease, push the slider to the Left as in Fig. 7



Fig. 6. Fully Open Position



Fig. 7. Fully Closed Position

AIR WASH SYSTEM

The air wash has an internal sliding plate with slots, housed in a cover plate, and is located inside the fire door. Sliding the control knob to the Right as far as it will go, achieves the fully open position, see Fig. 8. Sliding it to the Left will shut off the air inlet slots as shown in Fig. 9.



Fig. 8. Air Wash Fully Open Position



Fig. 9. Air Wash Fully Closed Position

Please note:

When adjusting the air controls remember they may be hot, always use a heat resistant glove

OPERATING INSTRUCTIONS

MULTI PURPOSE OPERATING TOOL

Your AX stove is supplied with a multi purpose operating tool, used for adjusting the air inlet control and the removal of the ash pan. (See Fig 10/10a)

TO EMPTY THE ASH PAN

The AX range of stoves are supplied with a unique ash pan. To empty or remove the ash pan, open the fire door, fit the fork end of the operating tool into the ash pan slots and remove from the ash pit chamber.

Empty the ash into a suitable container and replace the ash pan into the stove, withdraw the operating tool and close the fire door.



Fig.10 Operating Tool



Fig. 10a. Operating Tool & Ash pan



Fig.10b Stove Mitten

Please Note:

A stove mitten is supplied with your AX stove, (Fig. 10b) this is provided for the operation of the fire door handle and air controls whilst the stove is in use. Care must be taken when opening and closing the fire door as any surrounding areas of the stove will be very hot.

WARNING :

Never attempt to open the fire door whilst the appliance is in use WITHOUT the use of the stove mitten or suitable gloves, serious injuries may occur.

Caution must be taken when re-fuelling the appliance, always keep the stove mitten away from naked flames and sparks. Always use the stove mitten when emptying the ash pan.

ANNUAL MAINTENANCE

It is important that your appliance is regularly serviced in accordance with these instructions. This should be carried out at least annually by a qualified person and should consist of the following :

CLEANING

Important; Under some circumstances soot can quickly build up on the throat plate and adjacent areas. The throat plate should be removed and checked monthly, and any debris stripped off. Similarly, clean the upper surface of the firebox.

Remove the firebrick linings and throat plate, inspect all gasketing on doors, glass etc, and re-order any items that may need replacing from your AX stove Dealer.

With a wire brush clean inside the appliance paying particular attention to the small inlet holes of the air inlets on the inside of the fire door.

Sweep the chimney and confirm that it is sound. Examine all joints in the flue pipe etc, and re-seal if necessary. Re-assemble and leave with the air inlet and air wash control about half way open. This will allow a free flow of air through the appliance thus preventing moisture and condensation from building up inside the stove and chimney.

CHIMNEY SWEEPING

Sweeping should be carried out with an appropriate sized bristle brush and rods to suit chimney size and type. As with all appliances regular sweeping of the flue is essential to avoid danger of blockage and the escape of poisonous fumes. Access for cleaning should also be incorporated in the chimney (e.g.. Soot door or access through the register plate).

Any existing chimney should be swept prior to installation of the appliance, and swept again a second time **within one month** of regular use after installation to establish frequency of sweeping required. This should be done by a competent person such as a NACS chimney engineer who will provide a Certificate Of Chimney Sweeping. The whole flue way including the outlet must be swept at least twice per burning season. It is important that the flue ways, flue pipe and chimney

be cleaned prior to lighting the appliance after a prolonged shut down period.

DOOR GLASS

The door glass should remain clear during normal burning. However, under certain conditions, such as burning at a low rate or damp wood, or over-night burning, the glass may become somewhat blackened. To remedy this, operate the appliance at a fast rate. Alternatively when the stove is cold, open the door and clean the inside face of the glass with a damp cloth or with glass cleaner (available from fire stockists). A piece of cloth moistened with vinegar and dipped in wood ash (**not coal ash**) will provide a good soft scourer to remove the soot without scratching the glass.

OUTER FINISH

The outer finish of the appliance is a durable high temperature paint. It is best cleaned by brushing down with a clean shoe brush. Do not allow moisture to remain on the appliance whilst cold or surface rust may form.

The high temperature paint should not require attention for some time, depending on use. The hotter the fire burns sooner repainting will be necessary. Aerosol tins of paint are available for complete refurbishing.

Before repainting make sure that the fire is out and the stove is cold.

- Remove the door glass
- Lightly wire brush, or rub with wire wool, the body of the appliance to remove any loose paint or rust.
- Mask or remove items such as brass work.
- Any adjacent brickwork, mantelpiece, hearth etc, should be carefully masked for quite a distance around the appliance. This precaution is to prevent discolouration of the surrounding brickwork or wall paper etc.

Re-spray in a well ventilated area, avoid breathing the vapour. Refer to safety instructions on paint cans.

- When the paint is dry refit the door glass & any other parts previously removed.
- Leave the appliance for eight hours before lighting a fire.
- Burn slowly for the first four hours, then build up heat slowly to gradually cure paint.

Note: Use genuine Arada touch up spray as some paints interact. This could ruin the finish and invalidate the guarantee.

SERVICE & MAINTENANCE

SUMMER STORAGE / NON USAGE

Please ensure that your stove is left clean and moving components are well lubricated for the summer months (during periods of prolonged non use). If possible store the throat plate outside of the stove, check all moveable components, at regular intervals, to ensure they are moving freely.

Allow air movement through the stove, by opening the air wash and primary air inlet(s) controls to about half way open or leave the door ajar. This will allow a free flow of air through the appliance thus preventing moisture and condensation forming inside the stove and chimney. This preventative maintenance will ensure your stove stays in the best condition for the coming winter months.

ADJUSTING THE DOOR HINGES

Once the appliance has been under fire for a period of time the fire door may appear to have moved out of alignment with relation to the door aperture or catch. This is quite normal and due to the settling of the casting.

The fire door can be re-aligned as follows :

- When the appliance is cold, open the fire door so that it is at right angles to the front of the stove.
- Lift the fire door up off its hinges.
- Gently tap the hinge pins in the direction to compensate for the misalignment. (Fig. 11)
- Re-fit the door and check to ensure it now sits square to the body; if not repeat the above steps.

If the fire door needs to be raised, please follow :

- When the appliance is cold, open the fire door so that it is at right angles to the front of the stove.
- Lift the fire door up off the hinges.
- Drop one washer on the top and bottom hinge pins. Fit the door and check.

Please Note :

There is no adjustment to the door lock / catch assembly.



Fig. 11. Adjusting The Door Hinges

FUEL RETAINER

A Fuel retainer is supplied with the stove. Periodically check for any bowing or heat warp age to the fuel retainer and replace if necessary.

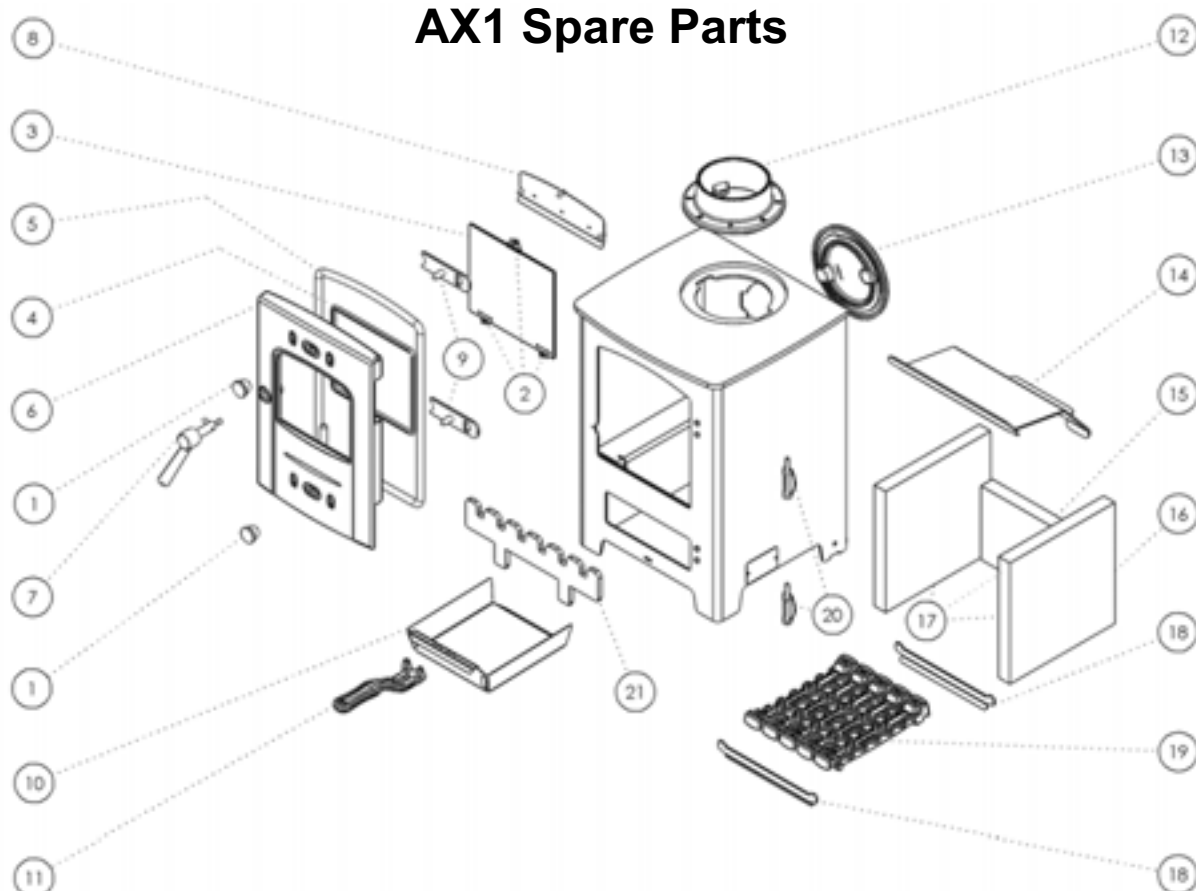


Fuel retainer

Please Note :

This operation should only be carried out when the appliance is unlit and cold.

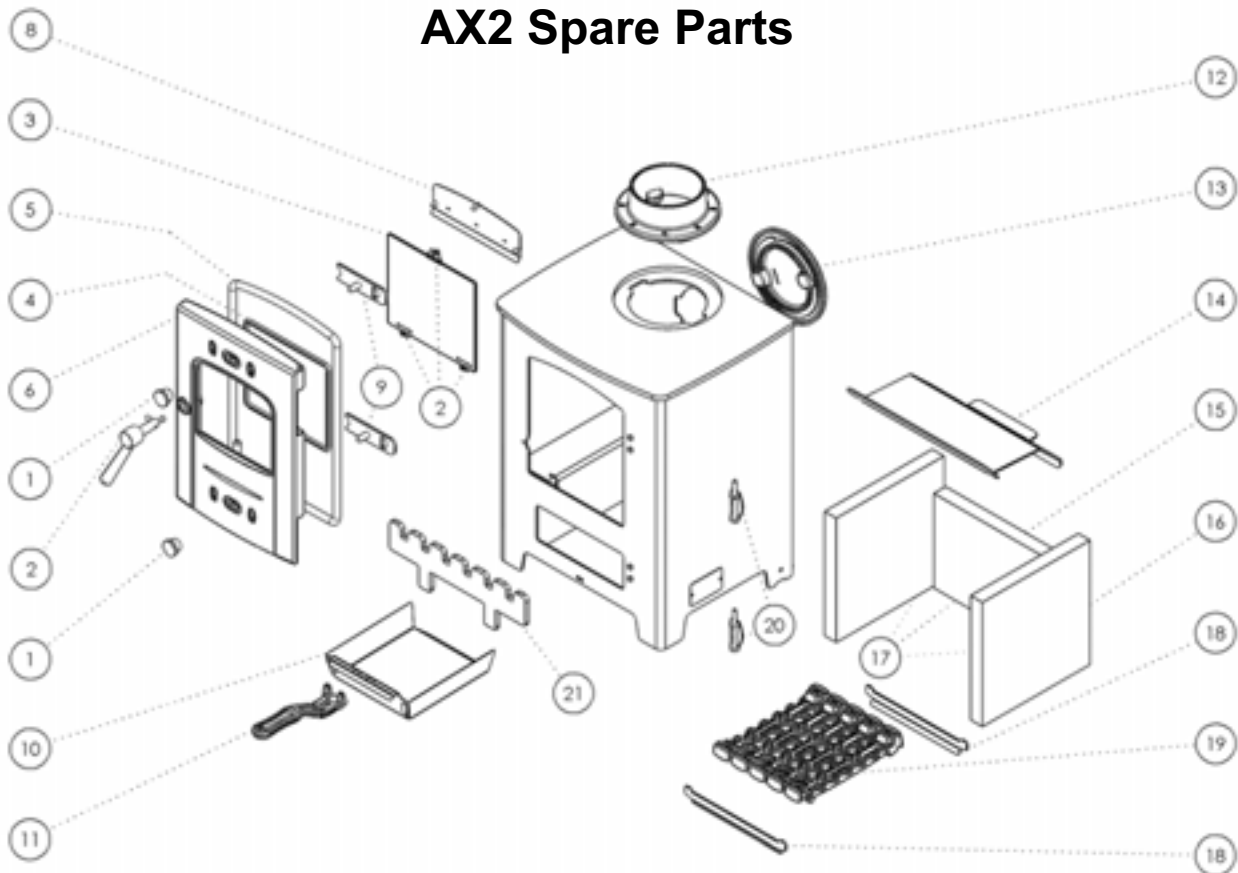
AX1 Spare Parts



Item No.	Part Code	Description	Qty Per Stove
1	AFS1405	Control Knob	2
2	-	Glass Clip	3
3	AFS1575	Glass Panel Kit (Includes Items 2, 3 & 4)	1
4	-	Glass Rope	1
5	AFS1576	Fire Door Rope Kit & Glue	1
6	-	Door Casting	1
7	AFS1577	Fire Door Handle Assembly	1
8	AFS1578	Airwash Cover (Includes Fixings)	1
9	AFS1579	Replacement Air Slider	2
10	AFS1273	Ash Pan	1
11	AFS008	Operating Tool	1
12	AFS009A	Flue Spigot	1
13	AFS009B	Hot Plate	1
14	AFS1596	Throat Plate	1
15	AFS1094	Rear Liner	1
16	AFS1063	Side Liner	2
17	AFS1595	Complete Liner Set	1
18	AFS1580	Fixed Grate G.B.S. (Grate Bar Support)	2
19	AFS001	Grate Bar	5
20	AFS1279	Hinge Kit (Includes Fixings)	2
21	AFS1582	Fuel Retainer	1
22	AFS1285	Hot Glove (Not Illustrated)	1
23	AFS1574	Instruction Manual (Not Illustrated)	1
24	AFS1583	Door Assembly (Includes Items 1, 2, 3, 4, 5, 6, 7, 8, 9)	1

SERVICE & MAINTENANCE

AX2 Spare Parts



Item No.	Part Code	Description	Qty Per Stove
1	AFS1405	Control Knob	2
2	-	Glass Clip	3
3	AFS1575	Glass Panel Kit (Includes items 2 3 & 4)	1
4	-	Glass Rope	1
5	AFS1576	Fire Door Rope Kit & Glue	1
6	-	Door Casting	1
7	AFS1577	Fire Door Handle Assembly	1
8	AFS1578	Airwash Cover (Includes Fixings)	1
9	AFS1579	Replacement Air Slider	2
10	AFS1273	Ash Pan	1
11	AFS008	Operating Tool	1
12	AFS009A	Flue Spigot	1
13	AFS009B	Hot Plate	1
14	AFS1585	Throat Plate	1
15	AFS1093	Rear Liner	1
16	AFS1063	Side Liner	2
17	AFS1581	Complete Liner Set	1
18	AFS1580	Fixed Grate G.B.S. (Grate Bar Support)	2
19	AFS001	Grate Bar	5
20	AFS1279	Hinge Kit (Includes Fixings)	2
21	AFS1582	Fuel Retainer	1
22	AFS1285	Hot Glove (Not Illustrated)	1
23	AFS1574	Instruction Manual (Not Illustrated)	1
24	AFS1583	Door Assembly (Includes Items 1, 2, 3, 4, 5, 6, 7, 8, 9)	1

GUARANTEE

Your AX range stove carries a guarantee against defects of manufacture and faulty workmanship for a period of 12 months from date of purchase. This does not apply to items which would be subject to fair wear and tear. Fire box liner panels, Fuel retainer, Throat plate, Door rope, Door glass and gaskets are not covered by the guarantee. However should you have any problems with your appliance please contact your supplier / stockist who will have the knowledge and facilities to help you.

The Supplier / Manufacturer will not be responsible for any consequential or incidental loss, damage, or injury however caused.

USE OF SPARE PARTS OTHER THAN THOSE SUPPLIED BY THE MANUFACTURER WILL INVALIDATE THE APPLIANCE WARRANTY.

All Guarantee periods commence on the date of purchase and are non-transferable. Our guarantee is offered as an addition to your statutory rights.

The guarantee is applicable to the original purchaser only and is non-transferable.

This installation and operating manual gives sufficient detail to enable the appliance to be installed and maintained. If further information is required please contact your AX range stove supplier, or our technical help line will be pleased to offer assistance.

Please telephone: **0844 8475107** -or -
email: **info@arada.uk.com**

When you contact the helpline, they will need to know :-

1. Your Name, Address, Post Code and Telephone Number.
2. Date of Purchase and Supplier Details..
3. Name of Installer.
4. Stove Serial Number (located on the stove data plate on the bottom left hand side of the stove body)
5. Clear and concise details of the Fault.

Please complete the following for you own records.

Date of Purchase.....

Name and Address of Supplier.....

.....

.....

.....

Stove Serial number.....

Final Factory Check list

Stove Model

Serial No.

Quality / Finish	
Parts	
Grate Bars	
Flue Outlet	
Hot Plate	
Fuel Retainer	
Firebox Liners	
Throat Plate	
Air Wash	
Ash Pan	
Operating Tool	
Stove Mitten	
Operating & Installation Manual	

***I've checked it
and its O.K !***

Assembled By.....

Checked By.....

Arada Ltd
The Fire Works
Weycroft Avenue
Axminster
Devon
EX13 5HU
United Kingdom

Tel: +44(0)1297 35700 Fax: +44(0)1297 35900 www.arada.uk.com