

## Ethanol Fireplace

FP- 018W

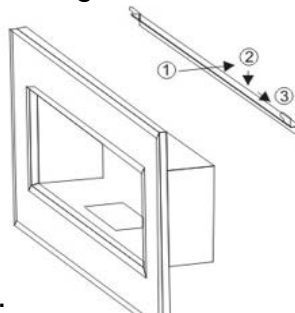
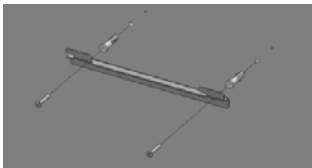


### Included in delivery (Parts List):

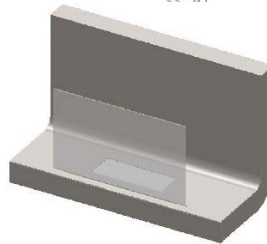
- |  |     |
|--|-----|
| A. Fireplace body                              | 1pc |
| B. 1.5L double-layer Burner                    | 1pc |
| C. Control tool                                | 1pc |
| D. Tempered glass                              | 1pc |
| E. Instruction manual and safety instructions. |     |

### Assembly Instructions:

1. Unpack the fireplace and accessories. Check the content for completeness and any damage incurred in transit. Keep children away from the packing.
2. Mount the mounting bar unit to the wall using the 2 screws, and wall plugs. Caution: The fireplace must only be installed on a solid wall of non-flammable material.
3. Attach the fireplace body onto the mounting bar unit. Follow the arrows.



4. Insert the glass into the intended slot.



5. Place the burner into the burning chamber of the fireplace body.